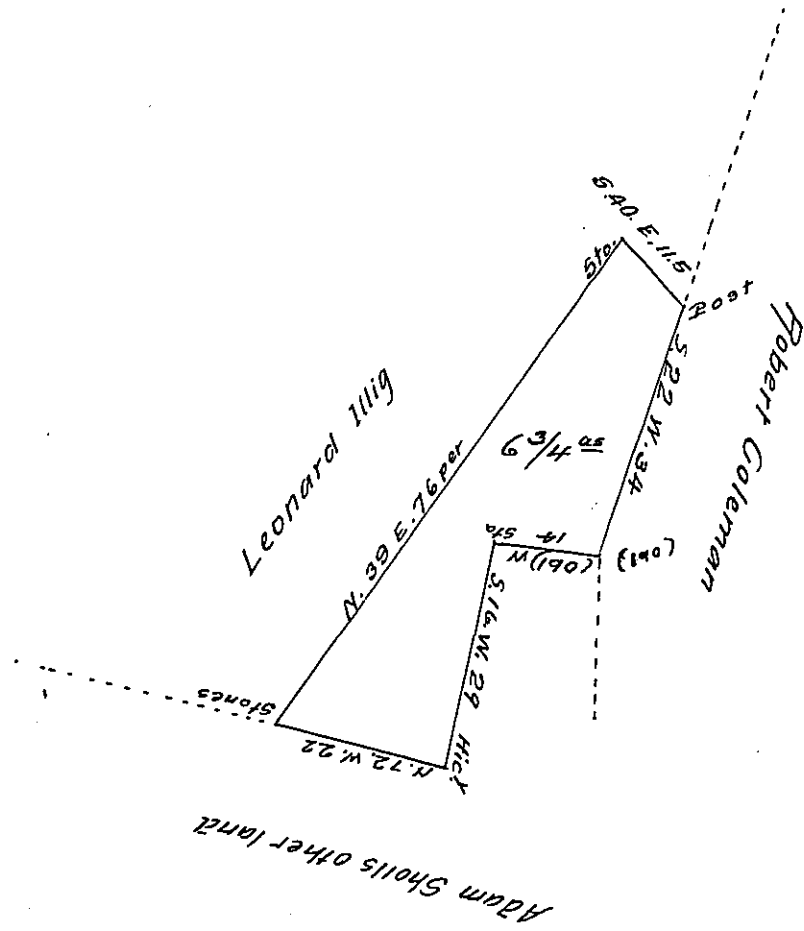


FORM NO. 1.



Surveyed the 20th day of December 1816 for Adam Sholl situate in Heidelberg Township Lebanon County containing Six Acres and three quarters and allowance of six per cent by his warrant dated the 26th November 1816

Thomas Smith D.S.

To Samuel Gochran Esquire
Surveyor General Pa.

IN TESTIMONY that the above is a copy of the original remaining on file in the Department of Internal Affairs of Pennsylvania, made conformably to an Act of Assembly approved the 16th day of February 1833, I have hereunto set my hand and caused the Seal of said Department to be affixed at Harrisburg, this eighteenth day of December 1907

Henry Howell
Secretary of Internal Affairs.